

A46 Coventry Junction (Walsgrave) Scheme Number: TR010066

8.5 Draft Itinerary for the Accompanied Site Inspection

The Infrastructure Planning (Examination Procedure) Rules 2010
Rule 17(1)

Planning Act 2008

Volume 8

May 2025

Deadline 1

Infrastructure Planning

Planning Act 2008

**Infrastructure Planning
(Examination Procedure)
Rules 2010**

A46 Coventry Junctions (Walsgrave) Development Consent Order 202[x]

DRAFT ITINERARY FOR THE ACCOMPANIED SITE INSPECTION

Rule Number	Rule 17(1)
Planning Inspectorate Scheme Reference	TR010066
Document Reference	TR010066/EXAM/8.5
Author	A46 Coventry Junctions (Walsgrave) Project Team, National Highways

Version	Date	Status of Version
Rev 0	May 2025	Deadline 1

1 Introduction

1.1 Purpose of this document

- 1.1.1 The purpose of this document is to set out the locations that National Highways (the “Applicant”) proposes the Examining Authority (ExA) visits as part of the Accompanied Site Inspection (ASI) (if required) in relation to the application for development consent for the A46 Coventry Junctions (Walsgrave) Scheme (the “Scheme”)
- 1.1.2 The ExA has requested that the Applicant provide a draft ASI itinerary by Deadline 1 on 27 May 2025. The draft ASI can be found at Chapter 3 of this document. A plan of the proposed route can be found at **Appendix A** of this document.
- 1.1.3 The ASI (if required) is scheduled to take place during the week commencing 8 July 2025, however a specific date has not been set.

2 Attendance at the ASI

- 2.1.1 The Applicant notes that the ASI is not an opportunity for any party to make oral representations to the ExA about the development consent application. However, the ExA may invite participants to indicate specific features or areas of interest.
- 2.1.2 If the ASI takes place, it may be necessary to limit the number of participants who accompany the ExA for safety and logistical reasons. However, the Applicant will accommodate, where possible, those Interested Parties (or their representatives) to join the ASI at specific locations where requested.
- 2.1.3 Those wishing to participate in the ASI (if required) should notify the Planning Inspectorate Case team at **A46Walsgrave@planninginspectorate.gov.uk** by Deadline 2. When confirming attendance participants should also confirm whether they wish to attend the full ASI or wish to join at specific locations only.
- 2.1.4 Parties wishing to participate in the ASI should also provide the following information:
- Mobile phone number (for contact purposes in relation to the ASI)
 - Any special access arrangements
 - Intention to travel on transport to be provided or their own vehicle
- 2.1.5 Parties should also contact the Planning Inspectorate Case team as soon as possible if they are no longer able to participate in the ASI.

3 Itinerary

- 3.1.1 The proposed itinerary is set out in Table 3.1 below. This includes indicative timings and a description of what is to be observed at each location. The final itinerary for the ASI (if required) will be published by the Examining Authority at least five working days before the ASI and will be available to view on the Scheme webpage of the National Infrastructure Planning website.
- 3.1.2 The Applicant will provide transport for the ASI. This approach is proposed to minimise traffic disruption particularly on local roads and also to minimise emissions from vehicles.
- 3.1.3 The transport to be provided for the ASI will convey those participants who have confirmed their intention to attend the whole day. Parties planning to join for part of the visit along the route will be expected to arrange their own mode of transport, but have regard to the itinerary timings, locations and parking arrangements. Parking may also be limited at some of the proposed locations. Where this is the case, these restrictions are noted in the itinerary at Table 3.1.
- 3.1.4 Part of the ASI will be undertaken on footpaths and by walking along local roads where there may not be a footpath. Therefore, these elements are subject to access being suitable for all participants, to good visibility and to weather conditions being appropriate. Participants should ensure appropriate footwear and clothing are worn. The Applicant will provide high-visibility vests.
- 3.1.5 Refreshments and lunch will not be provided. The Applicant will also arrange stops along the route to access welfare facilities.
- 3.1.6 The ASI will primarily be within publicly accessible land. Where access to private land is required for the purposes of the site inspection, this will only be done with the permission of the landowner.
- 3.1.7 The Applicant will bring any relevant plans or photomontages as well as an ASI brochure detailing the itinerary and providing health and safety advice. A health and safety talk will also take place prior to the commencement of the ASI.
- 3.1.8 Plans showing the proposed route and stop points is provided in **Appendix A** of this document.

Table 3.1 – Proposed Itinerary

Description	Time	Further information	Method of Travel	Distance (m)	Duration (minutes)
Meet at Brinklow Road Site Offices / Briefing	9.00am	Briefing to be held including health and safety information. Parking is available as well as toilet facilities.	N/A	N/A	30
Travel from Brinklow Road Site Offices to Farber Road	9.30am	Park vehicle to visit Viewpoints 1, 2 & 3. On-street parking at Farber Road available for interested parties. No refreshments or toilet facilities are available at this location.	Vehicle	4,600	10
Visit Viewpoints 1, 2, 3	9.40am	Viewpoint 1 - Recreational users of public path to Coombe Abbey Park/ PRow R75x and residential receptors at Farber Road/ Barrow Close, Walsgrave. Viewpoint 2 - Recreational receptors along the PRow R75x at Walsgrave Hill. Viewpoint 3 - Recreational receptors along the section of Centenary Way close to Coombe Abbey Park. No refreshments or toilet facilities are available at this location.	Walking	2,600	60
Travel from Farber Road Farm to Coombe Abbey Park	10.40am	Park vehicle to visit Viewpoint 13. Parking available for interested parties at Coombe Abbey Country Park (charges apply). Refreshments and toilet facilities are available at Coombe Abbey Country Park.	Vehicle	6,400	15

Description	Time	Further information	Method of Travel	Distance (m)	Duration (minutes)
Visit Viewpoint 10	10.55	Viewpoint 10 - Recreational receptors at Coombe Abbey Park, within the old deer park area. Refreshments and toilet facilities are available at Coombe Abbey Country Park.	Walking	1,600	30
Travel from Coombe Abbey Park to Brinklow Road Site Offices	11.25	Return to Site Offices. Due to privacy and safety concerns, Hungerley Hall Farm (which is the next viewpoint) may only be visited by ExA and relevant parties. Parties not attending the visit to Hungerley Hall Farm will return to the Brinklow Road Site offices at this point and the this will be the end of the ASI.	Vehicle	2,700	10
Travel from Brinklow Road Site Offices to Hungerley Hall Farm	11.35	Park vehicle to visit Viewpoint 13. No refreshments or toilet facilities are available at this location.	Vehicle	2,400	5
Visit Viewpoint 13	11.40	Viewpoint 13 - Hungerley Hall Farm. Visual receptors: Private residence and operational farm. Due to privacy and safety concerns, this may only be visited by ExA and relevant parties.	Walking	100	15
Travel from Hungerley Hall Farm to Farber Road Site Offices	11.55	Return to Site Offices, end of ASI.	Vehicle	2,400	5

Appendix A – Plans showing the proposed ASI

Meet at Brinklow Road Site Offices / Briefing

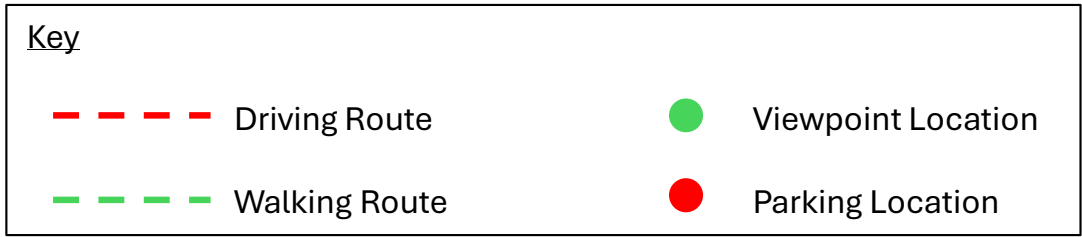
Octavius Infrastructure
Brinklow Road
Binley
Rugby
Warwickshire
United Kingdom
CV3 2AD, (Nearest postcode)
What3Words : wires.latter.fool

Please note: There is a security barrier installed at the offices, please ring the buzzer to gain access.

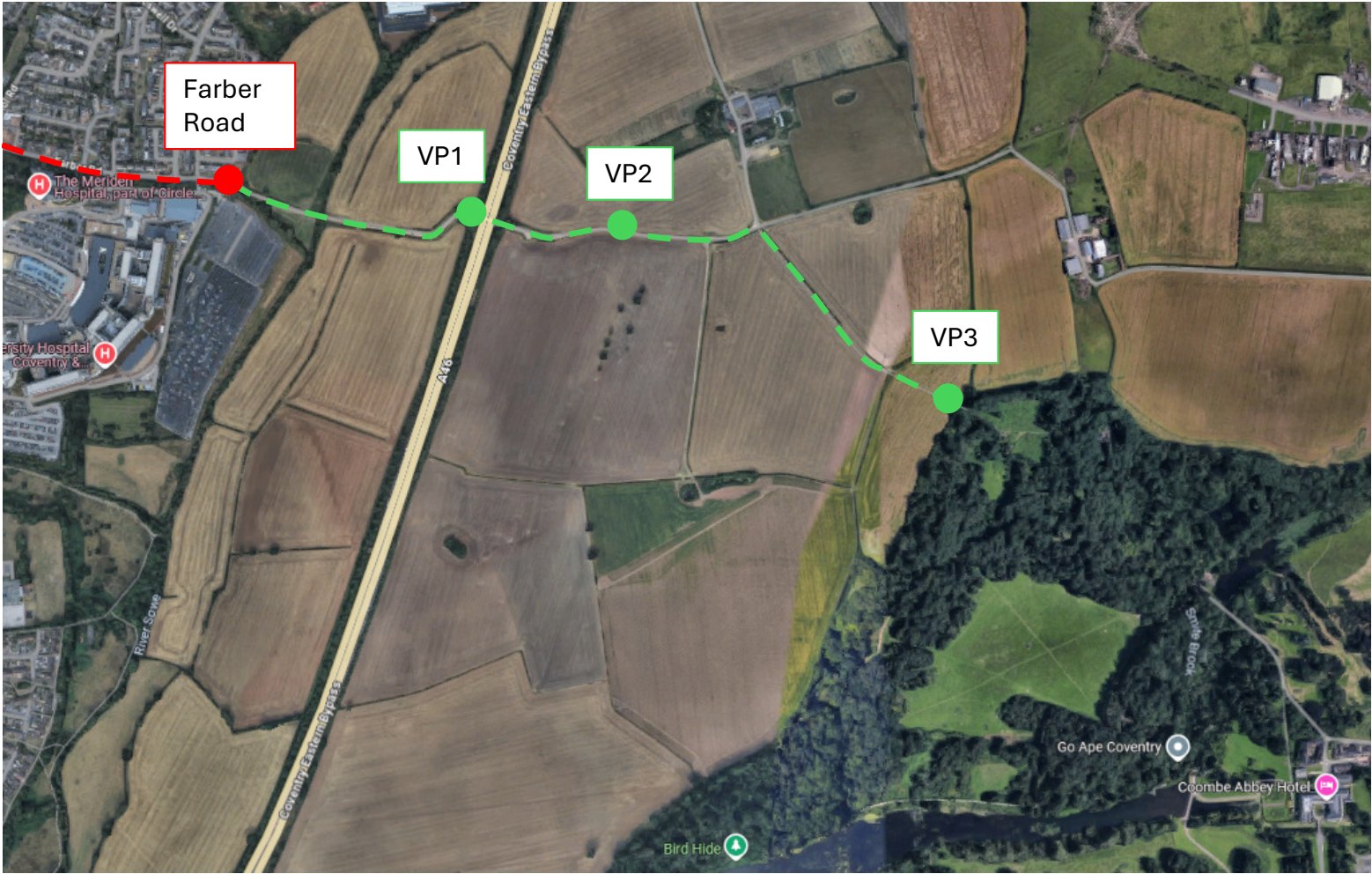


Key	
<div><div></div></div>	Driving Route
<div><div></div></div>	Walking Route
<div><div></div></div>	Viewpoint Location
<div><div></div></div>	Parking Location

Travel from Brinklow Road Site Offices to Farber Road



Visit Viewpoints 01, 02, 03



Key

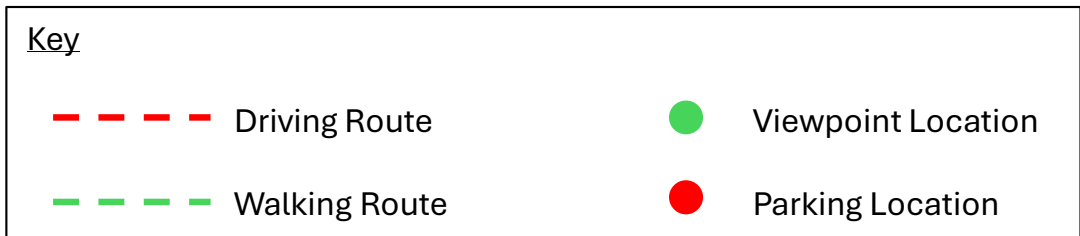
--- Driving Route

--- Walking Route

● Viewpoint Location

● Parking Location

Travel from Farber Road Farm to Coombe Abbey Park



Visit Viewpoint 10



Key

Driving Route

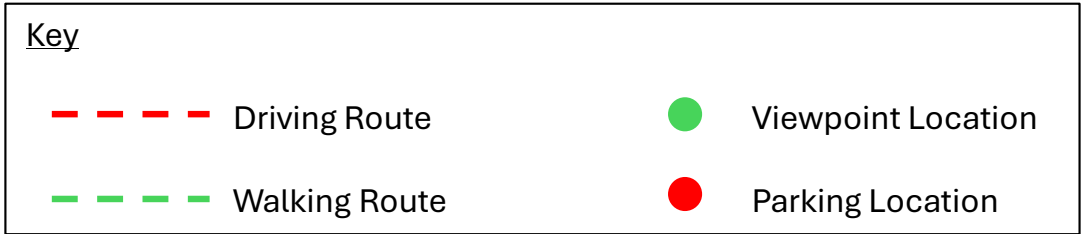
Viewpoint Location

Walking Route

Parking Location

Classification L2 - Business Data

Travel from Coombe Abbey Park to Brinklow Road Site Offices



Accompanied Site Inspection Itinerary

Travel from Brinklow Road Site Offices to Hungerley Hall Farm



Key

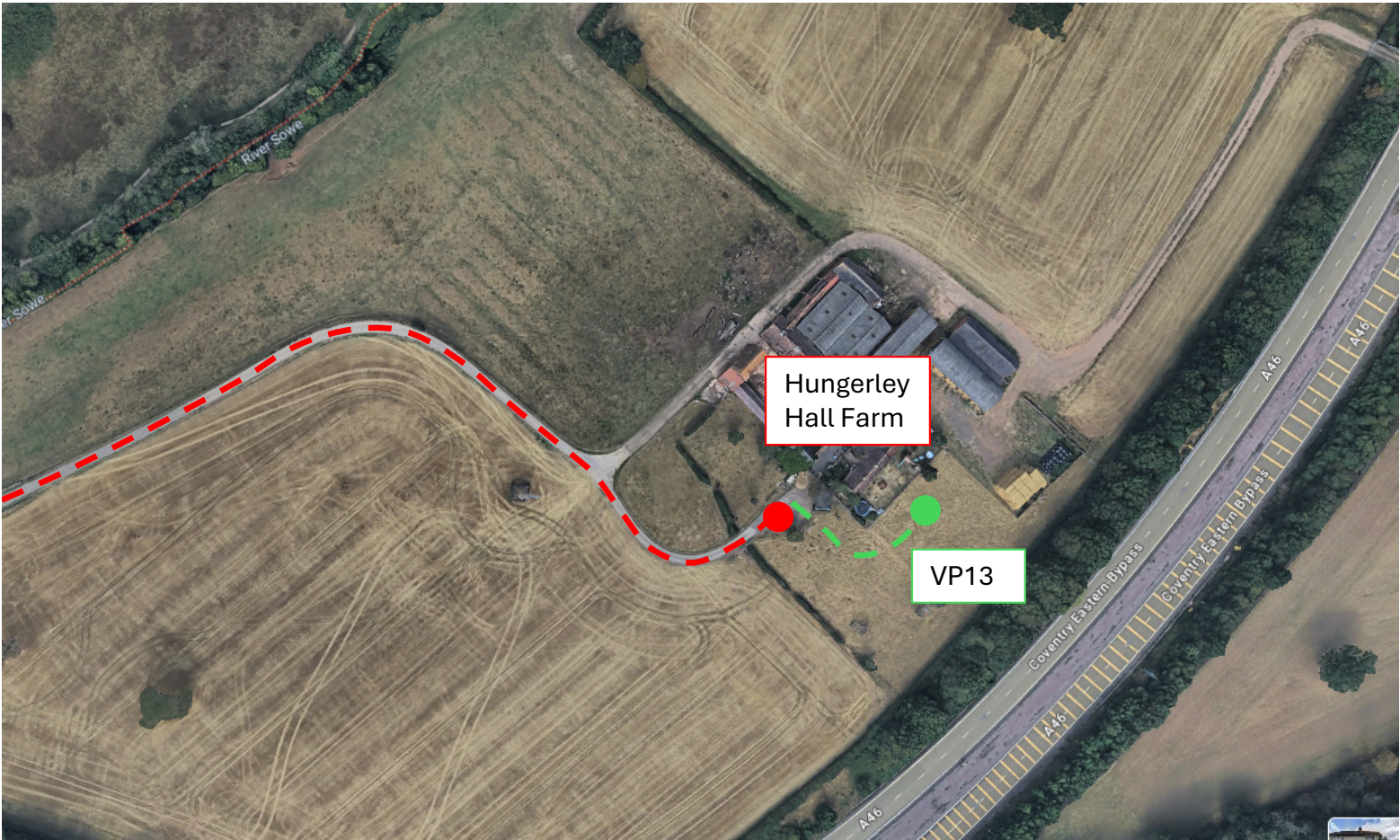
Driving Route

Viewpoint Location

Walking Route

Parking Location

Visit Viewpoint 13



Key

Driving Route

Walking Route

Viewpoint Location

Parking Location

Classification L2 - Business Data

Accompanied Site Inspection Itinerary

Travel from Hungerley Hall Farm to Brinklow Road Site Offices



Key

Driving Route

Viewpoint Location

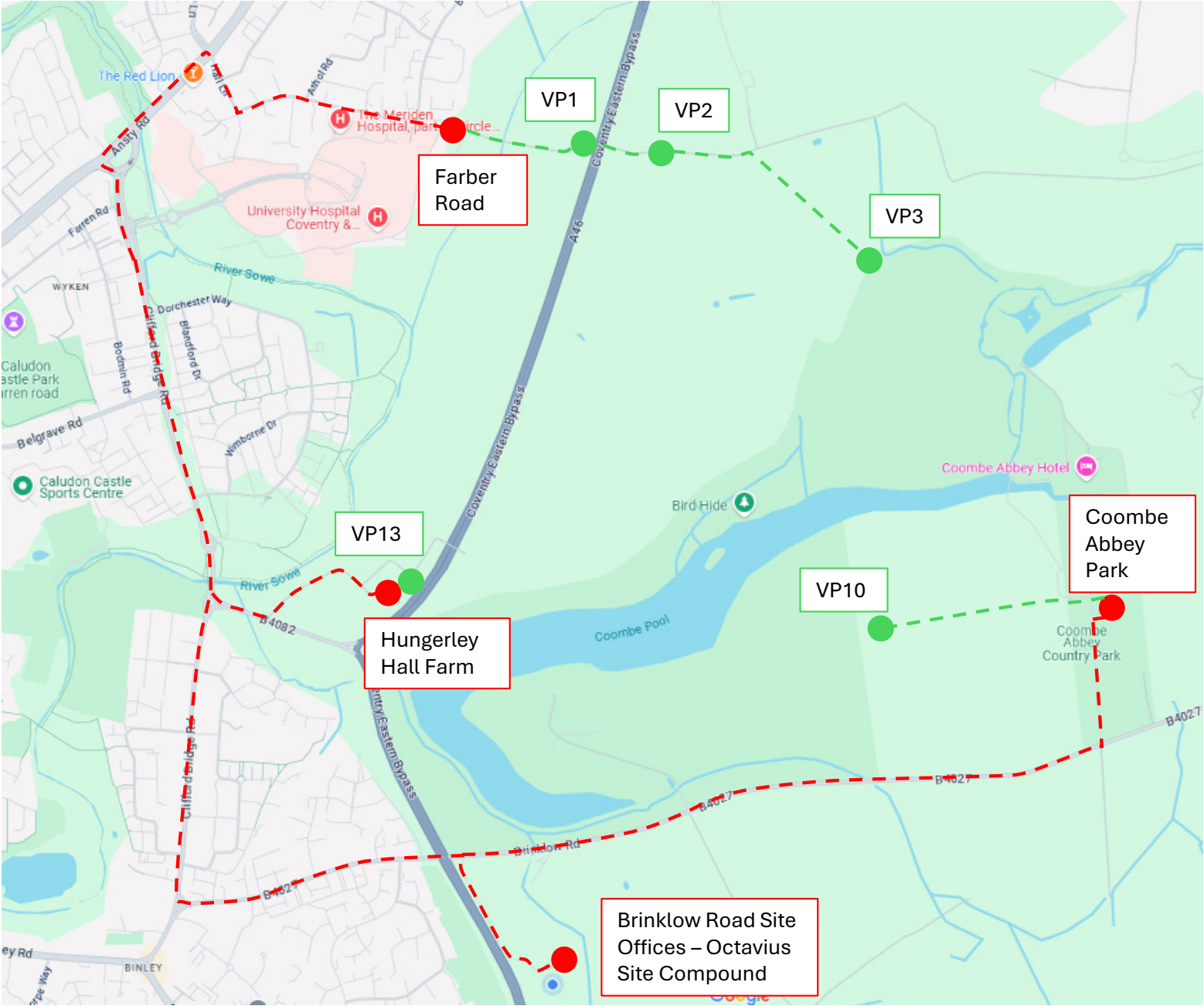
Walking Route

Parking Location

Classification L2 - Business Data

Accompanied Site Inspection Itinerary

Key Plan



Key

Driving Route

Walking Route

Viewpoint Location

Parking Location

Classification L2 - Business Data